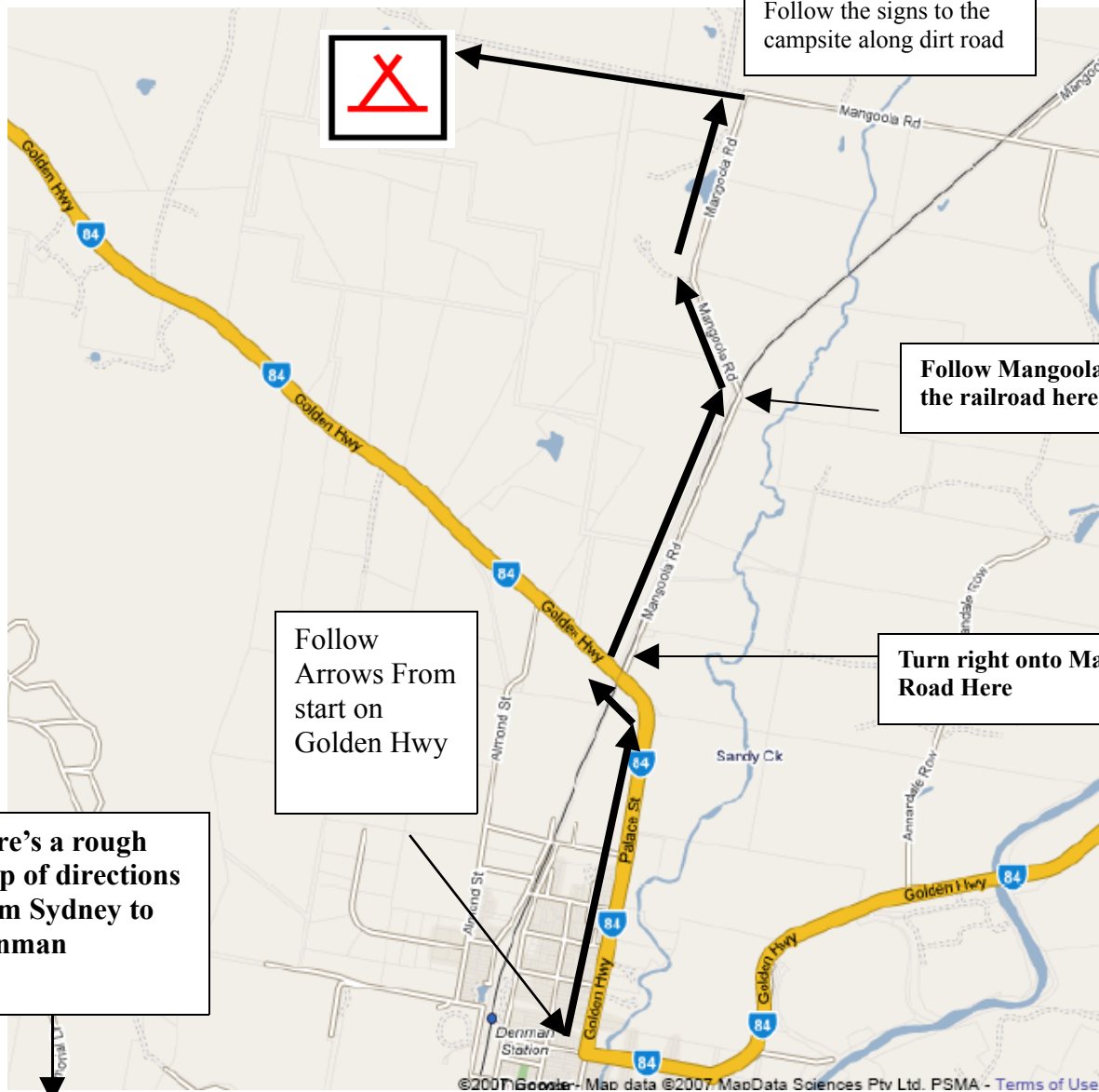
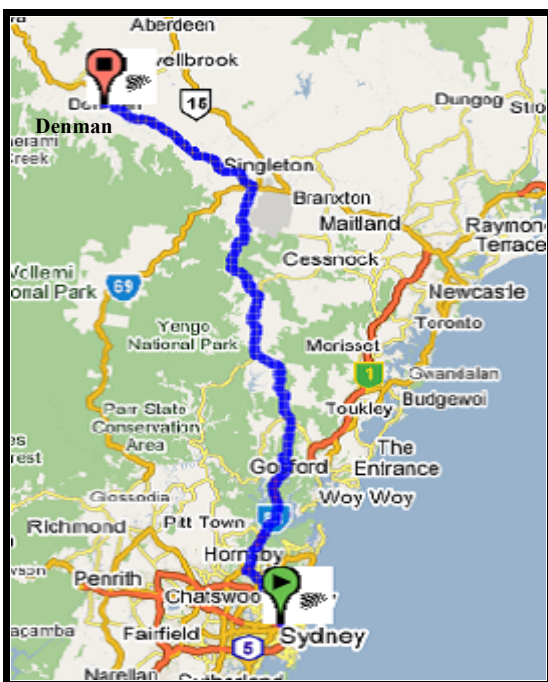


# HOW TO GET TO ANVIL HILL

Signposts will direct you to campsite and location of human sign



Here's a rough map of directions from Sydney to Denman



## Denman

1. Slight right at Western Distributor 0.5 km
2. Continue on Bradfield Hwy 1.4 km
3. Slight left to stay on Bradfield Hwy 0.5 km
4. Continue on Warringah Fwy 4.7 km
5. Continue on Gore Hill Fwy 1.6 km
6. Continue on Longueville Rd 0.2 km
7. Turn left at Kimberley Ave 0.3 km
8. Turn left at Gatacre Ave 0.2 km
9. Turn left at Pacific Hwy 14.2 km
10. Sharp right to stay on Pacific Hwy 0.2 km
11. Turn left to merge onto Sydney Newcastle Fwy 36.8 km
12. Exit onto Peats Ridge Rd 14.7 km
13. Slight left at George Downes Dr 38.8 km
14. Turn left to stay on George Downes Dr 8.1 km
15. Turn right toward Christina St 5.6 km
16. Slight right at Christina St 0.3 km
17. Continue on Maitland St 1.0 km
18. Maitland St turns right and becomes Mt Manning-Paynes Crescent Rd 11.9 km
19. Turn left at Wollombi Rd 16.8 km
20. Continue on Wollombi St 0.3 km
21. Continue on Broke Mt Thorley Rd 15.1 km
22. Turn left at Golden Hwy 28.8 km
23. Turn left to stay on Golden Hwy 24.7 km
24. Turn left at Golden Hwy 2.8 km
25. Continue on Jerdan St 59 m
26. Slight left at Golden Hwy